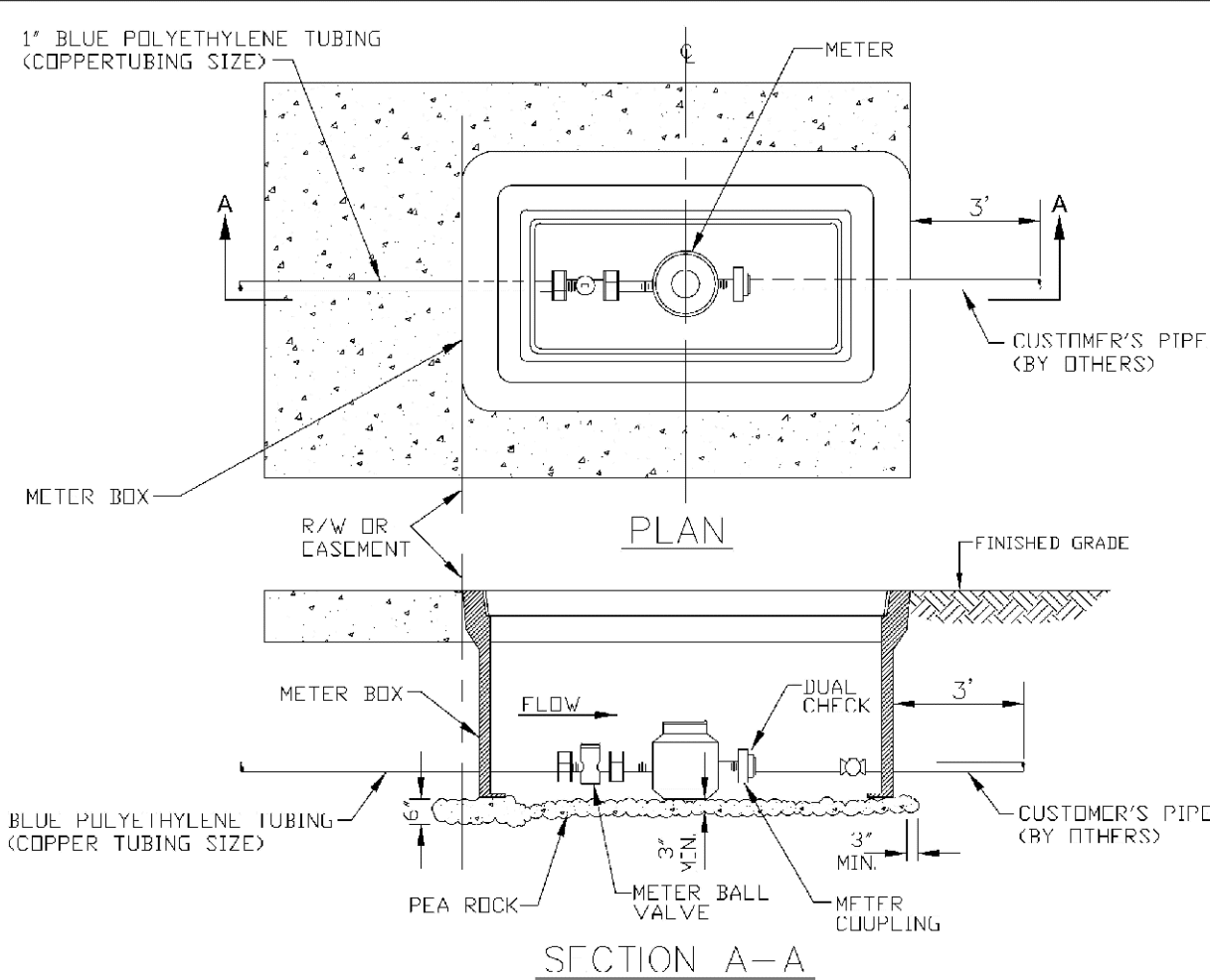


- NOTES**
1. THIS STRUCTURE & LID ARE FOR NON-TRAFFIC BEARING ONLY.
 2. DO NOT CONSTRUCT METER BOX UNTIL METER IS IN PLACE.
 3. CENTER BOX AROUND METER.
 4. DO NOT TIE CONCRETE LID TO CONCRETE WALLS.
 5. TOP OF LID TO BE @ FINISH GRADE ELEV.
 6. CUT OUT REPLACEABLE 10" SQUARE OVER EACH READING HEAD & FASTEN WITH AN.
 7. FITS NEPTUNE R450 ANTENNA.
 8. BILCO HATCH MODEL J-AI OR JD-AL OR EQUAL.

LARGE METER BOX

ENGINEERING STANDARDS 2022		
REVISIONS	ENGINEERING DIVISION	LARGE METER BOX
BY DATE	CITY OF POMPAÑO BEACH	
T.W. 03-2008		
S.S. 01-2012		
S.S. 11-2012		
SCALE: N.T.S.		DATE: MAY 2022 DWS. NO. 105-1

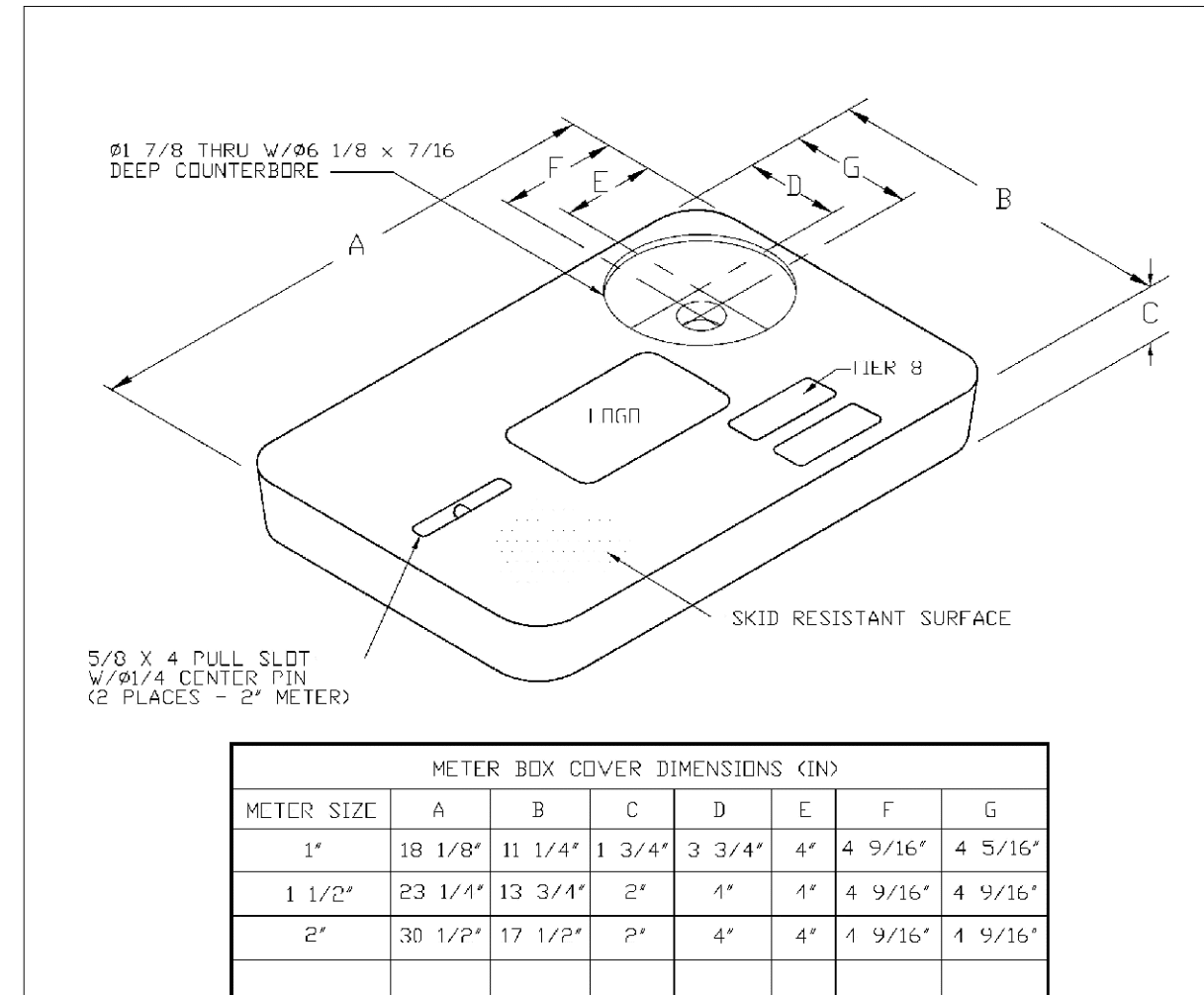


- NOTES**
1. ALL METERS WILL BE SUPPLIED AND INSTALLED BY CDDP UTILITIES. METER HAS 1/2" NPT THREADED MALL CONNECTION ON EACH END.
 2. METER SHALL BE CENTERED IN BOX.
 3. DUAL CHECK IS SAME SIZE AS CUSTOMER'S SERVICE LINE.

METER SIZE	LAYING LENGTH (IN)	HEIGHT (IN)
3/4"	7.5	4.56
1"	10.75	5.75

METER BOX INSTALLATION

ENGINEERING STANDARDS 2022		
REVISIONS	ENGINEERING DIVISION	METER BOX INSTALLATION FOR 5/8" AND 1" METERS
BY DATE	CITY OF POMPAÑO BEACH	
S.S. 11-2012		
SCALE: N.T.S.		DATE: JAN. 2022 DWS. NO. 105-2

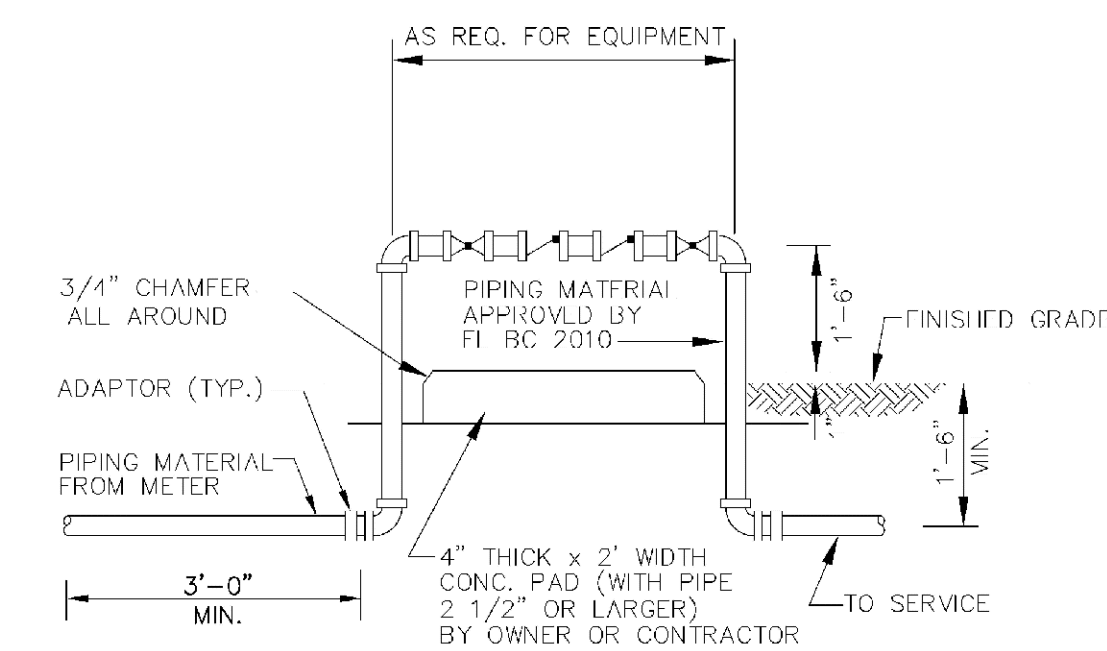


METER SIZE	A	B	C	D	E	F	G
1"	18 1/8"	11 1/4"	1 3/4"	3 3/4"	4"	4 9/16"	4 5/16"
1 1/2"	23 1/4"	13 3/4"	2"	4"	1"	4 9/16"	4 9/16"
2"	30 1/2"	17 1/2"	2"	4"	1"	4 9/16"	4 9/16"

- NOTES**
1. CUSTOMER IS CITY OF POMPAÑO BEACH FLORIDA. LOGO TO BE SPECIFIED: CITY OF POMPAÑO BEACH POTABLE WATER.
 2. FITS NEPTUNE R450 ANTENNA.
 3. THIS COVER IS RATED FOR A STATIC DESIGN LOAD OF 8,000 LBS. (35,548 N) OVER A 10 (254) X 10 (254) AREA AND MUST PASS A MINIMUM STATIC TEST LOAD OF 12,000 LBS. (53,378 N).
 4. METER BOX COVER SHOULD BE RATED FOR TRAFFIC CONDITION AS DETERMINED BY ENGINEER OF RECORD.

POTABLE WATER METER BOX COVER

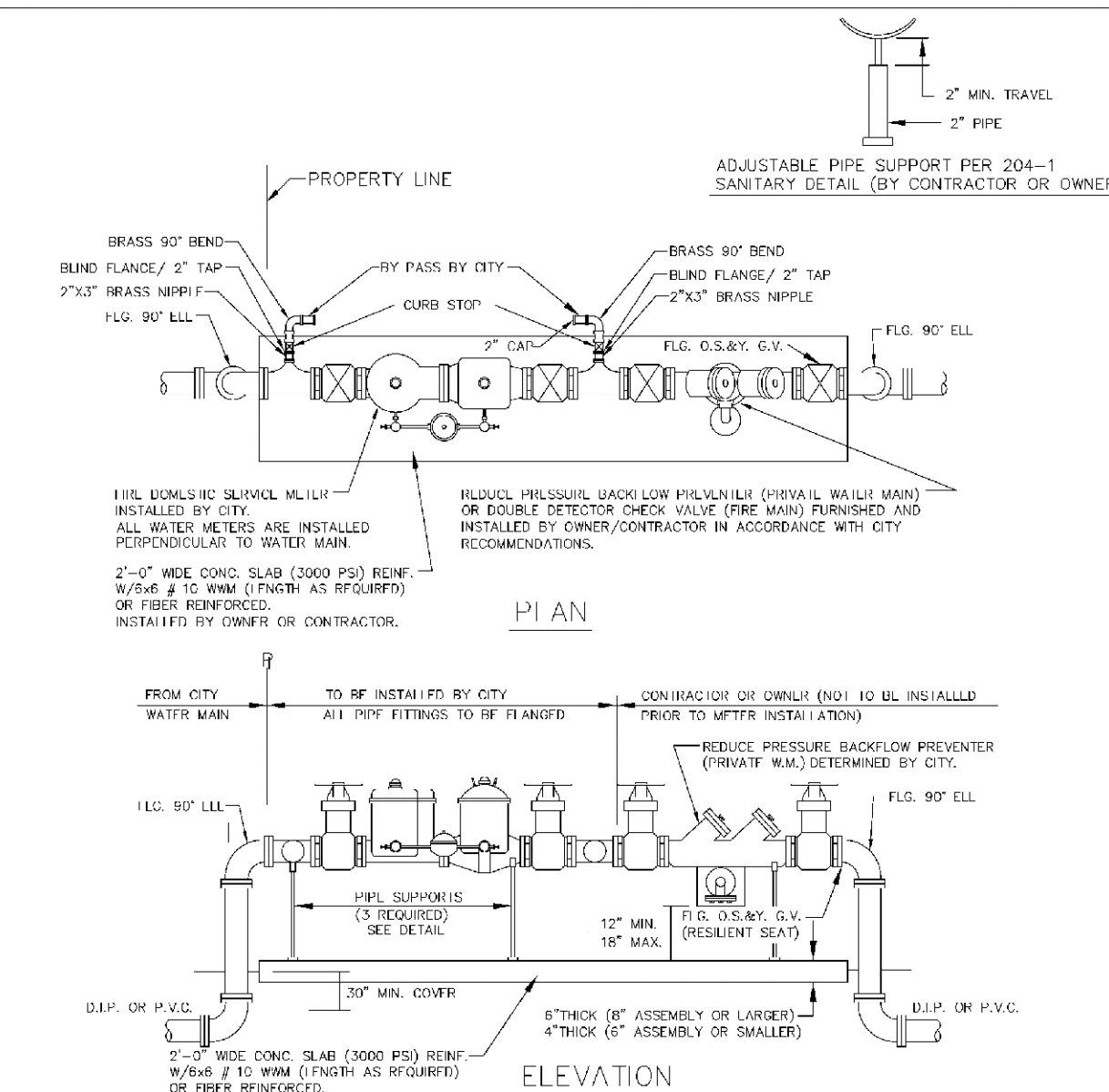
ENGINEERING STANDARDS 2022		
REVISIONS	ENGINEERING DIVISION	TYPICAL METER BOX COVER
BY DATE	CITY OF POMPAÑO BEACH	
S.S. 11-2012		
SCALE: N.T.S.		DATE: JAN. 2022 DWS. NO. 105-3



BACKFLOW PREVENTER

USE MEGALUGS AT ALL PIPE JOINTS 3" AND LARGER.
PLEASE SEE METER INSTALL DIMENSION LIST ON STANDARD NO. 106-4
SMALL UNITS UNI-STRUT SUPPORT

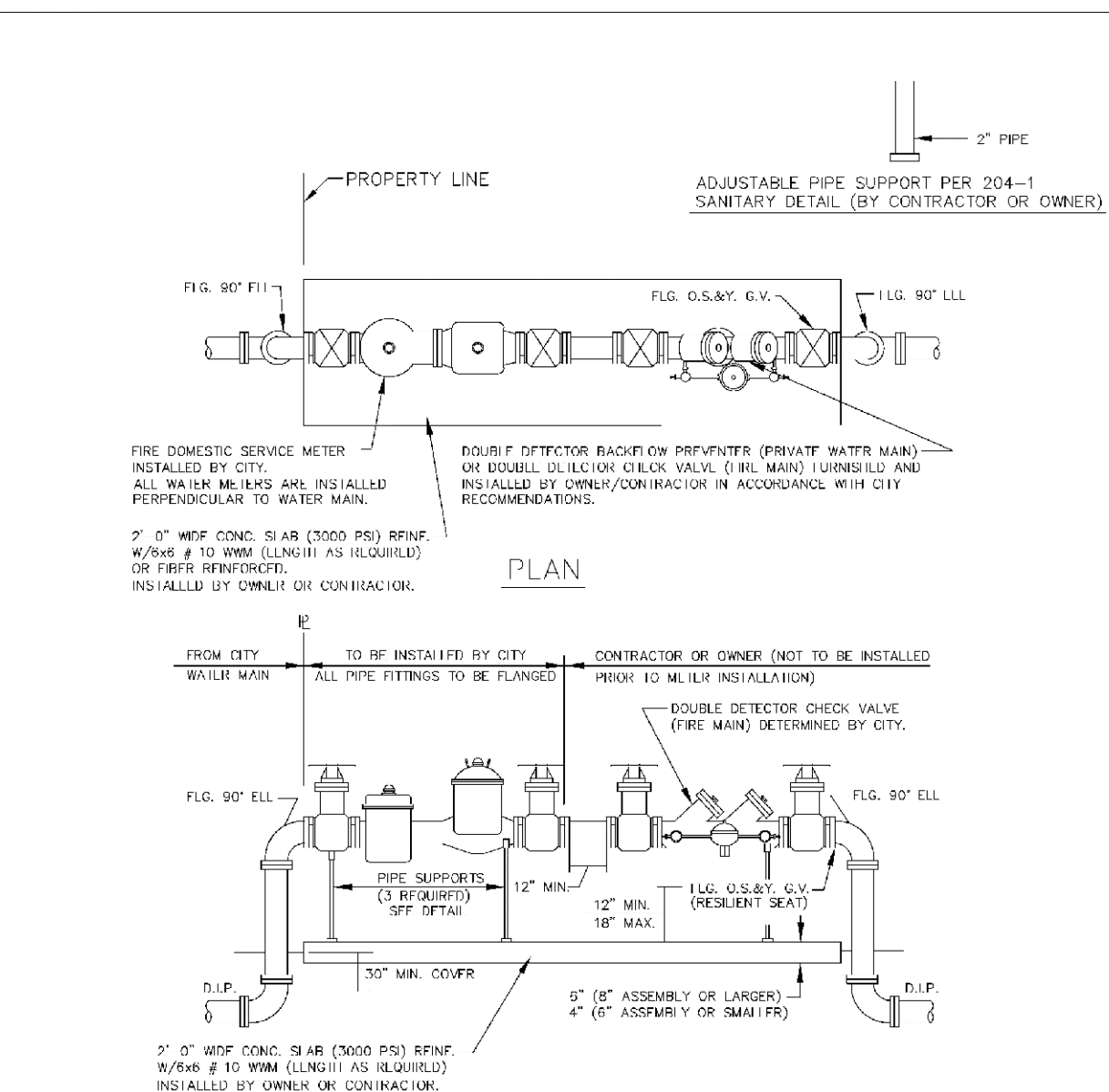
ENGINEERING STANDARDS 2022		
REVISIONS	ENGINEERING DIVISION	BACKFLOW PREVENTER
BY DATE	CITY OF POMPAÑO BEACH	
T.W. 04-2008		
S.S. 03-2009		
S.S. 11-2012		
S.S. 09-2013		
SCALE: N.T.S.		DATE: MAY 2022 DWS. NO. 106-1



MASTER METER AND BACKFLOW DEVICE DETAILS FIRE AND DOMESTIC COMBINED SOURCE

- NOTES**
1. THE BACKFLOW PREVENTER FOR THE BY-PASS SHALL BE DDCV OR RPZ.
 2. PLEASE NOTE THAT WATER METERS 3" AND LARGER ARE SUBJECT TO AN APPROXIMATE ORDER LEAD TIME OF 60 TO 75 DAYS AFTER FULL PAYMENT. PLEASE CONTACT CUSTOMER SERVICE AT 954-786-4637 TO ARRANGE FOR METER PROCUREMENT AND INSTALLATION.
 3. USE MEGALUGS AT ALL PIPE JOINTS.
 4. PLEASE SEE METER INSTALL DIMENSION LIST ON STANDARD NO. 106-4.

ENGINEERING STANDARDS 2022		
REVISIONS	ENGINEERING DIVISION	MASTER METER AND BACKFLOW DEVICE
BY DATE	CITY OF POMPAÑO BEACH	
S.S. 05-2011		
S.S. 11-2012		
S.S. 12-2013		
S.S. 11-2016		
SCALE: N.T.S.		DATE: MAY 2022 DWS. NO. 106-2



FIRE ONLY METER AND BACKFLOW DEVICE DETAILS

- NOTES**
1. THE BACKFLOW PREVENTER FOR THE BY-PASS SHALL BE DDCV OR RPZ.
 2. PLEASE NOTE THAT WATER METERS 3" AND LARGER ARE SUBJECT TO AN APPROXIMATE ORDER LEAD TIME OF 60 TO 75 DAYS AFTER FULL PAYMENT. PLEASE CONTACT CUSTOMER SERVICE AT 954-786-4637 TO ARRANGE FOR METER PROCUREMENT AND INSTALLATION.
 3. USE MEGALUGS AT ALL PIPE JOINTS.
 4. PLEASE SEE METER INSTALL DIMENSION LIST ON STANDARD NO. 106-4.

ENGINEERING STANDARDS 2022		
REVISIONS	ENGINEERING DIVISION	FIRE ONLY METER AND BACKFLOW DEVICE
BY DATE	CITY OF POMPAÑO BEACH	
S.S. 05-2011		
S.S. 11-2012		
S.S. 12-2013		
S.S. 11-2016		
SCALE: N.T.S.		DATE: MAY 2022 DWS. NO. 106-3

FIRE METERS - OS & Y VALVES, GASKETS & METER		
SIZE	VALVES (2)	GASKETS (4)
3" w/ 4" X 3" Reducer **	18"	1/2"
4"	18"	1/2"
6"	21"	1/2"
8"	23"	1/2"
10"	26"	1/2"
FIRE &/or Domestic Water SERVICE METERS - TEES, OS & Y VALVES, GASKETS & METERS		
SIZE	TEES (2)	VALVES (2)
3" w/ 4" X 3" Reducer **	3" X 3" - 22"	18"
4"	4" X 3" - 26"	18"
6"	6" X 4" - 32"	21"
8"	8" X 4" - 36"	23"
10"	10" X 6" - 44"	26"

- *All fittings, valves and meters are flanged & all dimensions are from face of flange to face of flange.**
- NOTE:**
PLEASE NOTE THAT WATER METERS 3" AND LARGER ARE SUBJECT TO AN APPROXIMATE ORDER LEAD TIME OF 60 TO 75 BUSINESS DAYS AFTER FULL PAYMENT. PLEASE CONTACT CUSTOMER SERVICE AT 954-786-4637 TO ARRANGE FOR METER PROCUREMENT AND INSTALLATION. LARGE METERS MUST BE AT MINIMUM ORDERED PRIOR TO INITIAL INSPECTIONS.

ENGINEERING STANDARDS 2022		
REVISIONS	ENGINEERING DIVISION	METER INSTALL DIMENSION LIST
BY DATE	CITY OF POMPAÑO BEACH	
T.W. 02-2008		
S.S. 11-2016		
A.S. 01-2022		
SCALE: N.T.S.		DATE: JAN. 2022 DWS. NO. 106-4

GREGORY FRANKLIN BOLEN, P.E., STATE OF FLORIDA, PROFESSIONAL ENGINEER, LICENSE NO. 56729

THIS ITEM HAS BEEN ELECTRONICALLY SIGNED AND SEALED BY GREGORY FRANKLIN BOLEN, P.E. ON 6/30/2025 USING A SHA-1 AUTHENTICATION CODE.

PRINTED COPIES OF THIS DOCUMENT ARE NOT CONSIDERED SIGNED AND SEALED AND THE SHA-1 AUTHENTICATION CODE MUST BE VERIFIED ON ANY ELECTRONIC COPIES.

SIMMONS & WHITE

2581 Metrocenre Blvd West, Ste 3 | West Palm Beach, FL 33407
Authorization # 3452 | 561.478.7848

DESIGN	DRAWN	CHECKED	APPROVED	DATE
C.M.	B.L.			

HODGE MARINE
SECTION 27, TOWNSHIP 48S., RANGE 42E.
CITY OF POMPAÑO BEACH, FLORIDA
ON SHORE WATER AND WASTEWATER DETAILS

DRC

JOB NO.	DRAWING NO.	SHEET	OF
25-093	P2255090024	C-12	C-15